

Digitally Powered Cylindric Wave Radiator **GL 24 dp**



Active high-performance line array systems for optimised speech and music reproduction in acoustically challenging rooms. The precise, broadband sound bundling to a nominal 20° vertical dispersion is achieved through the acoustic coupling of two slightly curved line arrays, arranged one behind the other within the cabinet. This innovative arrangement is complemented by the horn guide in the high frequency range to ensure an exceptionally homogeneous and symmetrical 100° horizontal dispersion. The GL 24 systems are particularly suitable for individual applications up to a distance of 25 metres, and can also be used as a downfill under the GL 16i. The integrated digital amplifier technology provides 2 x 800 Watt and DSP control.

PRODUCT SPECIFICATIONS

Speaker Components	6 x 6,5" Nd / 24 x 1" Nd Tweeter
Description	Digitally Powered Cylindric Wave Radiator
Amp Power	2 x 800 W AES biamped / 110-230 V
Rated Current	1,8 A @ 230 V
SPL <small>Peak @ 1 m</small>	>130 dB
Max. Input Signal	25 dBu
DSP	HDLM FPGA Processing 32 bit floating point
AD / DA	24 bit / 96 kHz
Latency	0,8 ms (analog in to analog out)
Usable Range	80 Hz - 20 kHz (-6 dB)
Tuning Frequency <small>excursion minimum</small>	90 Hz
X-Overpoint <small>acoustical</small>	Depends on preset
Coverage <small>horizontal / vertical</small>	100° x 20° (degressive curved)
Mechanical Splay Angle	13°
Connectors	Neutrik XLR in/out Neutrik PowerCon in/out Neutrik Speakon NL4MP out
Handles	2 x
Rigging / Fittings	9 x M10 35 mm pole mount
Weight	22,0 kg
Size <small>height x width x depth</small>	106,0 x 18,9 x 34,3 (24,5) cm
Order No.	00520/dp

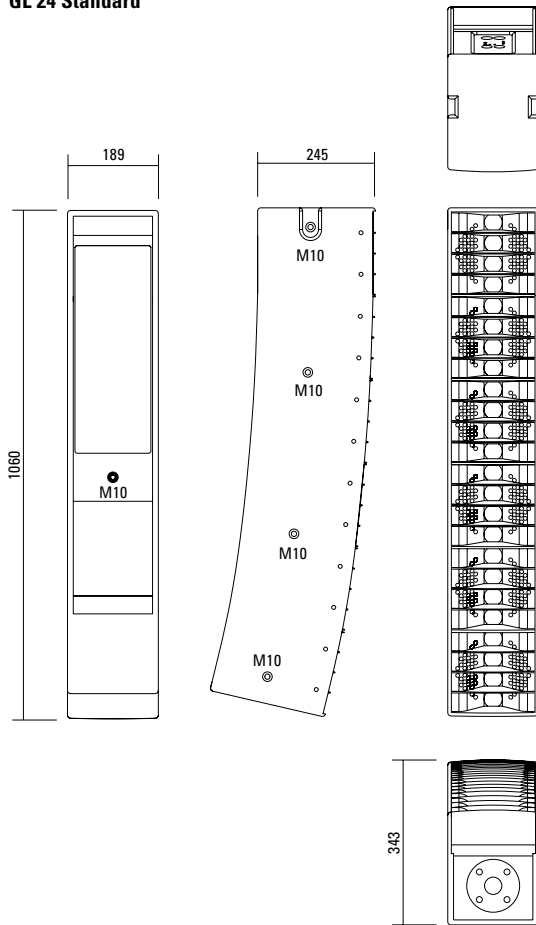


Flying Bracket.

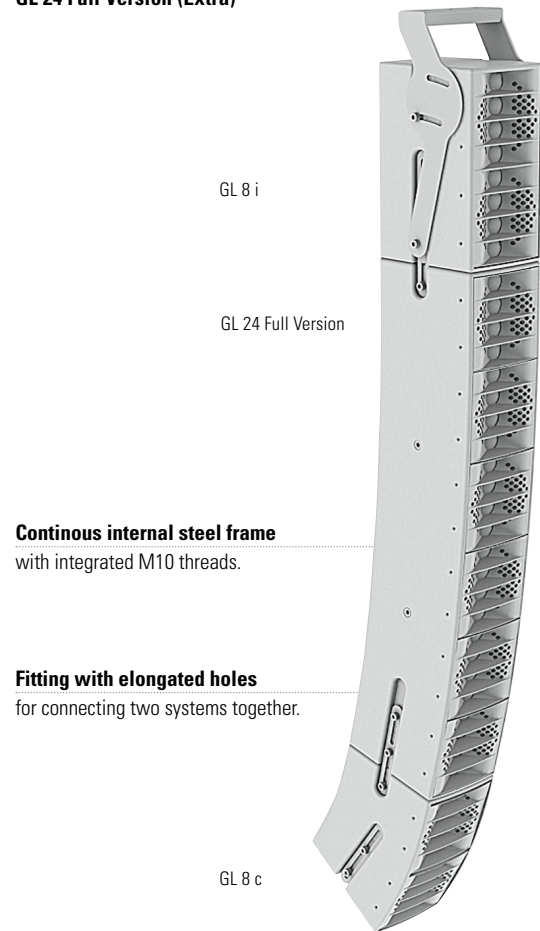


DIMENSIONS

GL 24 Standard



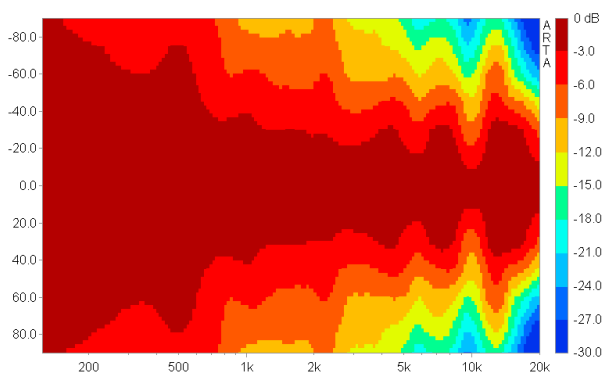
GL 24 Full Version (Extra)



COVERAGE PATTERNS

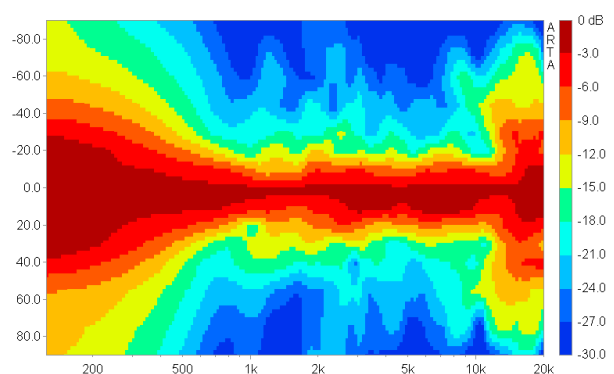
GL 24 horizontal - 2D Directivity Plot

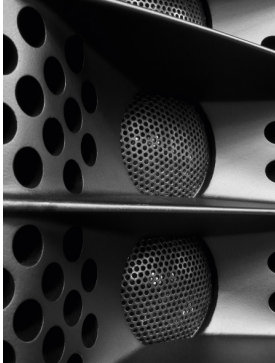
100° horizontal dispersion for good performance in wide venues.



GL 24 vertical - 2D Directivity Plot

The j-curved leads to an unsymmetrical vertical dispersion, narrower in the upper section for long throw and wider in the lower section for near field.



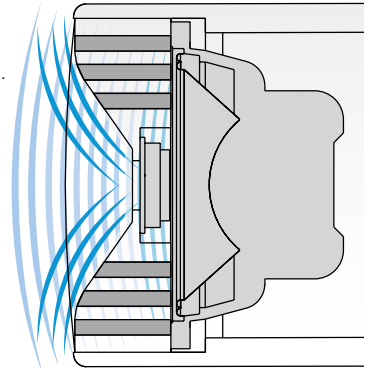


AMR® Principle.*

The AMR horn contains integrated channels which allow the sound waves generated by the low-mid speakers mounted behind the horn to pass through.

For sound waves in the frequency range generated by the 1" HF driver, these channels behave as if they were sealed due to the air mass inside the channels acting as a reflector (AMR = Air Mass Reflection).

The low-mid speakers are coupled to an acoustical band pass filter with a center frequency close to the crossover frequency between the Mid and HF drivers. This construction provides smooth horizontal dispersion over a wide frequency range. Another asset is the extreme compactness of this design.



*patentrechtlich geschützt

APPLICATIONS



Flying Cradle.



Integrated 35 mm Pole Mount.



Flying Bracket.



GL 24 dp / G Sub 1501
For applications up to 25 m distance.



GL 16 i dp 1000 / GL 24 dp / G Sub
For applications up to 40 m distance.



2 x GL 16 i dp 1000 / GL 24 dp
For applications up to 80 m distance.

The GL 24 dp features integrated digital amplifier electronics with a DSP controller. Various factory-configured presets and volume settings can be selected.

High-grade electronic components from the industrial sector and a first-class circuit design ensure excellent audio quality with low distortion and a minimal noise floor.

Highly efficient and "intelligent" limiter systems ensure optimum protection against overload, without restricting the possibilities offered by this high-performance sound system.

Presets

Flat

Standard setting with linear frequency response for stand-alone use.

Low (slight)

Slight reduction of low / mid range frequencies for combination with one GL 16 system.

Low (strong)

Strong reduction of low / mid range frequencies for combination with several GL 16 systems.

HP

120 Hz high pass filter for combination with subwoofers.

Level

Adjustment in 3 dB steps (-6 dB to +3 dB).

Status

Mute LED

Red light when the system is muted or under technically critical conditions.

Limit LED

Yellow light when the limiter is restricting the level.

Signal LED

Green light when the input signal exceeds -20 dBu

Power LED

Green light when the system is switched on.

XLR

Symmetrical analog input max. Input +25 dBu. Effective filter protection against HF interference and DC Voltages. Electronically balanced to prevent noise.

GL 24 dp

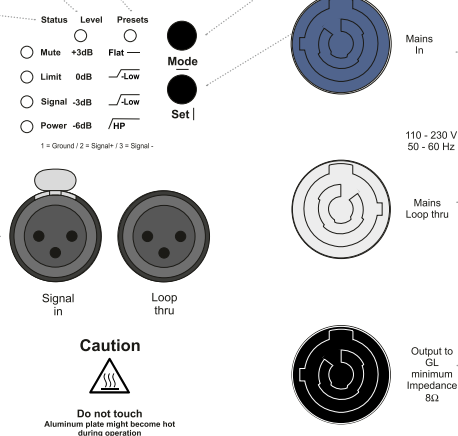
Cylindric Wave Radiator

Serial No.:

Power	2x 800 W AES biamped
Input Impedance	10 kΩ
Coverage	100° x 20°
Frequency Range	80 Hz - 20 kHz
Mains Supply	100 - 230 VAC
Weight	22kg



Made in Germany
www.seeburg.net



Mode - key

Switches between control modes Status, Level and Presets.

Set - key

Setting of various values and Mute on / off.

PowerCon (blue)

Power supply
~ 110-230 V / 16 A max.

PowerCon (grey)

~ 110-230 V / 16 A max.
loop through connector

Speakon NL4MP

Parallel output connection for a passive GL 24 system with an impedance of 8 Ω.

Flying Cradle



for GL System,
max. load 120 kg
Order No. **01354**

Flying Bracket



for GL 24,
incl. (black version: 4 x M10 x 20
handle screws, white version:
4 x M10 x 20 socket head screws)
Order No. **01352/GL24/set/w** (RAL 9010)
Order No. **01352/GL24/set**

Handle Screw



for flying brackets, adjustable
Order No. **08375/20** (M10 x 20)
Order No. **08375/30** (M10 x 30)

Clamping Bar



for flying bracket GL 24 / GL 24 j,
for stronger angling
Order No. **01352/clamp**

Connection Bar



GL 24 standard version → GL 8 c
for Downfill,
a pair, incl. accessories
Order No. **08159**

Pole Mount Adapter - M20



for flying bracket,
M20 x 35 mm with nut,
incl. 1 x M20 x 30 socket head screw,
1 x flat
Order No. **08127/nut**

Quick Trigger TV Clamp



Max. load 200 kg
Order No. **01223/TV**

Quick Trigger Clamp



max. load 100 kg
Order No. **01223/100 kg**

TV Adapter



M20 external thread,
28 mm Ø
Order No. **08128/M20**

Shackle



for GL flying cradle,
max. load 1000 kg
Order No. **01372/GL**

Ring Screw



M10– DIN 580
Order No. **73700** (zincd)
Order No. **73700/sw** (black zincd)

Steel Safety



6 mm x 600 mm, black,
max. load 22 kg (BGI 810-3),
quick connector undetachably
Order No. **01376/6**

Chain Fastener



VBS 7 mm
Order No. **01378**



TV Adapter -> Flying Bracket



Clamping Bar



Spacer

ACCESSORIES GL 24 dp

Wall Mount



2 x M6 fixing holes (d=73 mm),
1 x M10 fixing hole (center),
max. load 25 kg
Order No. **03034**

Spacer



for wall mount (03034),
M10 x 55 (screw),
polyurea coated
Order No. **03034/spc**

Wall Mount



for U-brackets, max. load 40 kg,
incl. screws (M10 x 70 mm socket
head screw, M10 hex lock nut and
flat washer)
Order No. **08130/F/400** (400 mm)
Order No. **08130/F/269** (269 mm)

Speaker Stand



K&M, incl. wind up,
height 138,5 to 218 cm,
max. load 50 kg
Order No. **03011**

K&M, height 137,5 to 218,5 cm,
max. load 50 kg
Order No. **03010**

Hybrid Cable System



PowerCon-PowerCon / XLR-XLR
2,5 m Order No. **08462**
5 m Order No. **08464**
10 m Order No. **08466**
15 m Order No. **08468**

Stretch Cover



for GL 24 / GL 24 j
Order No. **01233/stretch/black**
Order No. **01233/stretch/grey**
Order No. **01233/stretch/white**

Rain Cover



for GL 24, incl. low lid,
connectable to other covers of the
GL-system
Order No. **01233/outdoor/2**

Bag



for one unit GL 24
Order No. **01233**

Flight Case



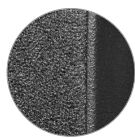
for 2 pcs. GL 24 units,
and accessories, heavy duty, 9 mm
birch multiplex, PVC coated, hinged lid,
8 x recessed sprung handles,
2 x butterfly catches, 4 x 100 mm blue
wheels, 2 pcs. with brake, stackable,
inserts for accessories, interior lined
with felt, loading measurements,
Size (H x W x D): 48,0 x 115,5 x 61,0 cm
Order No. **16013/pro/T**

EXTRAS



Grille on Front

Order No. **01179/GL 24**



Acoustic Foam on Front

Order No. **01178/GL 24**



Full Version

Integrated Flying Frame with
connecting bars
Order No. **01177/GL 24**

Colour Selection

RAL 9010, Pure White
Order No. **01199/GL 24**